



Customer information packet

XM25762T

54M 6P XPFC HOR 254T T'STATS INV DUTY

Class - CLI GP D; CLII GP F,G

Division - Division I

Specifications

Enclosure	XPFC
Frame	254T
Frame Material	Iron
Frequency	50.00 Hz 60.00 Hz
Motor Letter Type	Three Phase
Output @ Frequency	7.500 HP @ 60 HZ 5.000 HP @ 50 HZ
Phase	3
Synchronous Speed @ Frequency	1200 RPM @ 60 HZ
Voltage @ Frequency	190.0 V @ 50 HZ 230.0 V @ 60 HZ 380.0 V @ 50 HZ 460.0 V @ 60 HZ
XP Class and Group	CLI GP D; CLII GP F,G
XP Division	Division I
Agency Approvals	CSA EEV UL
Ambient Temperature	40 °C
Auxillary Box	No Auxillary Box
Auxillary Box Lead Termination	None
Base Indicator	Rigid
Bearing Grease Type	Polyrex EM (-20F +300F)
Blower	None
Constant Torque Speed Range	6
Current @ Voltage	11.000 A @ 460.0 V 19.200 A @ 190.0 V 22.000 A @ 230.0 V 23.000 A @ 208.0 V 9.600 A @ 380.0 V
Design Code	A
Drip Cover	No Drip Cover

Part detail

Revision	M
Type	AC
Mech. spec.	09E270
Base	
Status	PRD/A
Elec. spec.	09WGT118
Layout	09LYE270
Eff. date	07-19-2023
CD Diagram	CD0005
Poles	06
Leads	9#12
Proprietary	False
Created date	03-26-2019

Duty Rating	CONT
Efficiency @ 100% Load	91.0 %
Electrically Isolated Bearing	Not Electrically Isolated
Feedback Device	NO FEEDBACK
Front Shaft Indicator	None
Heater Indicator	No Heater
High Voltage Full Load Amps	9.6 a
Insulation Class	F
Inverter Code	Inverter Duty
IP Rating	NONE
KVA Code	J
Lifting Lugs	Standard Lifting Lugs
Locked Bearing Indicator	Locked Bearing
Max Speed	1800 rpm
Motor Lead Quantity/Wire Size	9 @ 12 AWG
Motor Lead Termination	Flying Leads
Motor Standards	NEMA
Motor Type	X0954M
Mounting Arrangement	F1
Number of Poles	6
Overall Length	25.50 IN
Power Factor	70
Product Family	Hazardous Location Motor
Pulley End Bearing Type	Ball
Pulley Face Code	Standard
Pulley Shaft Indicator	None
Rodent Screen	None
RoHS Status	ROHS NON-COMPLIANT
Service Factor	1.15
Shaft Diameter	1.625 IN
Shaft Ground Indicator	No Shaft Grounding
Shaft Rotation	Reversible
Shaft Slinger Indicator	No Slinger
Speed	1180 rpm

	985 rpm
Speed Code	Single Speed
Starting Method	Direct on line
Thermal Device - Bearing	None
Thermal Device - Winding	Normally Closed Thermostat
Vibration Sensor Indicator	No Vibration Sensor
Winding Thermal 1	None
Winding Thermal 2	None
XP Temp Code	T3C

Nameplate

NP0887XPSLEV

NO.		CC	010A		
S/N		TEMP CODE	T3C		
SPEC.	09E270T118G3	INV.TYPE	PWM		
CAT.NO.	XM25762T	C HP FR	60	C HP TO	90
HP	7.5//5	CT HZ FROM	6	CT HZ TO	60
VOLTS	230/460//190/380	VT HZ FROM	6	VT HZ TO	60
AMPS	22/11//19.2/9.6	MAG CUR	12/6		
RPM	1180//985	MX RPM	1800		
HZ	60//50	PH	3	CL	F
		NOM.EFF.	91		
SER.F.	1.15	DES	A	SL HZ	1
		WK2	4.34		
FRAME	254T	RATING	40C AMB-CONT		
	55C AMB @1.0SF ON VFD,60C RISE				
	NEMA MG-1 PT.5,IP54				

Parts list

Part number	Description	Quantity
SA367748	SA 09E270T118G3	1.000 ea
RA357226	RA 09E270T118G3	1.000 ea
MJ5000A09	EFI KIT #1578 (400 ML CARTRIDGE OF EFI	0.200 ea
09CB1000A57	CONDUIT BOX, MACH	1.000 ea
10XN3118K16	5/16-18 X 1' GRADE #5, STL, ZINC PLATE	4.000 ea
HW1001A31	LOCKWASHER 5/16, ZINC PLT.591 OD, .319 I	4.000 ea
WD1000B25	GND LUG, BURNDY L125HP OR T&B L125HP-BB	1.000 ea
19XW3118G08	.31-18X.50,HEX WSHR HD,TAPTITE 2,GREEN	1.000 ea
HW1001A25	LOCKWASHER 1/4, ZINC PLT .493 OD, .255 I	1.000 ea
09EP1700A01	FR ENDPLATE, MACH	1.000 ea
10XN3816K28	3/8-16 X 1.75 HEX HD CAP SCREW, GRADE 5	4.000 ea
HW1001A38	LOCKWASHER 3/8, ZINC PLT .688 OD, .382 I	4.000 ea
HW5100A08	W3118-035 WVY WSHR (WB)	1.000 ea
HA2002A05	SPACER, #208 BRG	1.000 ea
10XN2520K36	1/4-20 X 2.25" HX HD SCRWGRADE 5, ZINC P	4.000 ea
09EP1707A01	PU ENDPLATE, MACH	1.000 ea
10XN3816K28	3/8-16 X 1.75 HEX HD CAP SCREW, GRADE 5	4.000 ea
HW1001A38	LOCKWASHER 3/8, ZINC PLT .688 OD, .382 I	4.000 ea
09FH1004A01	FAN COVER, MACH	1.000 ea
10XN2520K14	1/4-20 X .88 HEX GRD 5 (20001)	3.000 ea
HW1001A25	LOCKWASHER 1/4, ZINC PLT .493 OD, .255 I	3.000 ea
09CB1500A01SP	CONDUIT BOX LID, MACH	1.000 ea
10XN2520K16	1/4-20 X 1" HX HD SCRW GRADE 5, ZINC P	6.000 ea
HW1001A25	LOCKWASHER 1/4, ZINC PLT .493 OD, .255 I	6.000 ea
HW2501G25	KEY, 3/8 SQ X 2.875	1.000 ea
LB1073	ALUM XP CAUTION LABEL	1.000 ea
MJ5001A27	32220KN GRAY SEALER *MIN BUY 4 QTS=1GAL	0.001 qt
HW4500A20	1/8NPT SL PIPE PLUG	2.000 ea
MJ1000A02	GREASE, POLYREX EM EXXON	0.080 lb
HW4500A20	1/8NPT SL PIPE PLUG	2.000 ea
09FN3001D01SP	EXTERNAL FAN, PLASTIC (COMES W/SCREW FRO	1.000 ea

HW2500A25	WOODRUFF KEY USA #1008 #BLOW CARBON STEE	1.000 ea
MG1025G29	WILKOFAST, 789.229, DARK CHARCOAL GRAY	0.050 ga
85XU0407S04	4X1/4 U DRIVE PIN STAINLESS	6.000 ea
LC0145B01	CONNECTION LABEL	1.000 ea
NP0887XPSLEV	SS XP INV UL CSA-EEV CC CL-I GP-D	1.000 ea
40PA1005	PACKAGING GROUP, 09 STD	1.000 ea
MN416A01	TAG-INSTAL-MAINT no wire (2100bx)4/22	1.000 ea
LD7020D09	LEAD SET, 12AWG, 9 LEAD, 20" LONG LEADS	1.000 ea
LB1624	COMBINED WARNING LABEL, ISO/ANSI PICTOGR	1.000 ea

AC Induction Motor Performance Data

Record # 47560

Typical performance - not guaranteed values

Winding: 09WGT118-R004		Type: 0954M	Enclosure: XPFC	
Nameplate Data			460 V, 60 Hz: High Voltage Connection	
Rated Output (HP)	7.5//5		Full Load Torque	33.2 LB-FT
Volts	230/460//190/380		Start Configuration	direct on line
Full Load Amps	22/11//19.2/9.6		Breakdown Torque	113 LB-FT
R.P.M.	1180//980		Pull-up Torque	41.3 LB-FT
Hz	60//50	Phase 3	Locked-rotor Torque	57.4 LB-FT
NEMA Design Code	A	KVA Code J	Starting Current	74.8 A
Service Factor (S.F.)	1.15		No-load Current	6.06 A
NEMA Nom. Eff.	91	Power Factor 70	Line-line Res. @ 25°C	0.87037 Ω
Rating - Duty	40C AMB-CONT		Temp. Rise @ Rated Load	36°C
S.F. Amps			Temp. Rise @ S.F. Load	42°C

Load Characteristics 460 V, 60 Hz, 7.5 HP

% of Rated Load	25	50	75	100	125	150	S.F.
Power Factor	32	52	63	70	74	75	72
Efficiency	83.2	89.4	90.9	91.1	90.7	89.9	90.9
Speed	1196.5	1192.4	1188.3	1183.7	1178.7	1173.2	1181
Line amperes	6.49	7.59	9.09	11	13.1	15.5	12.3

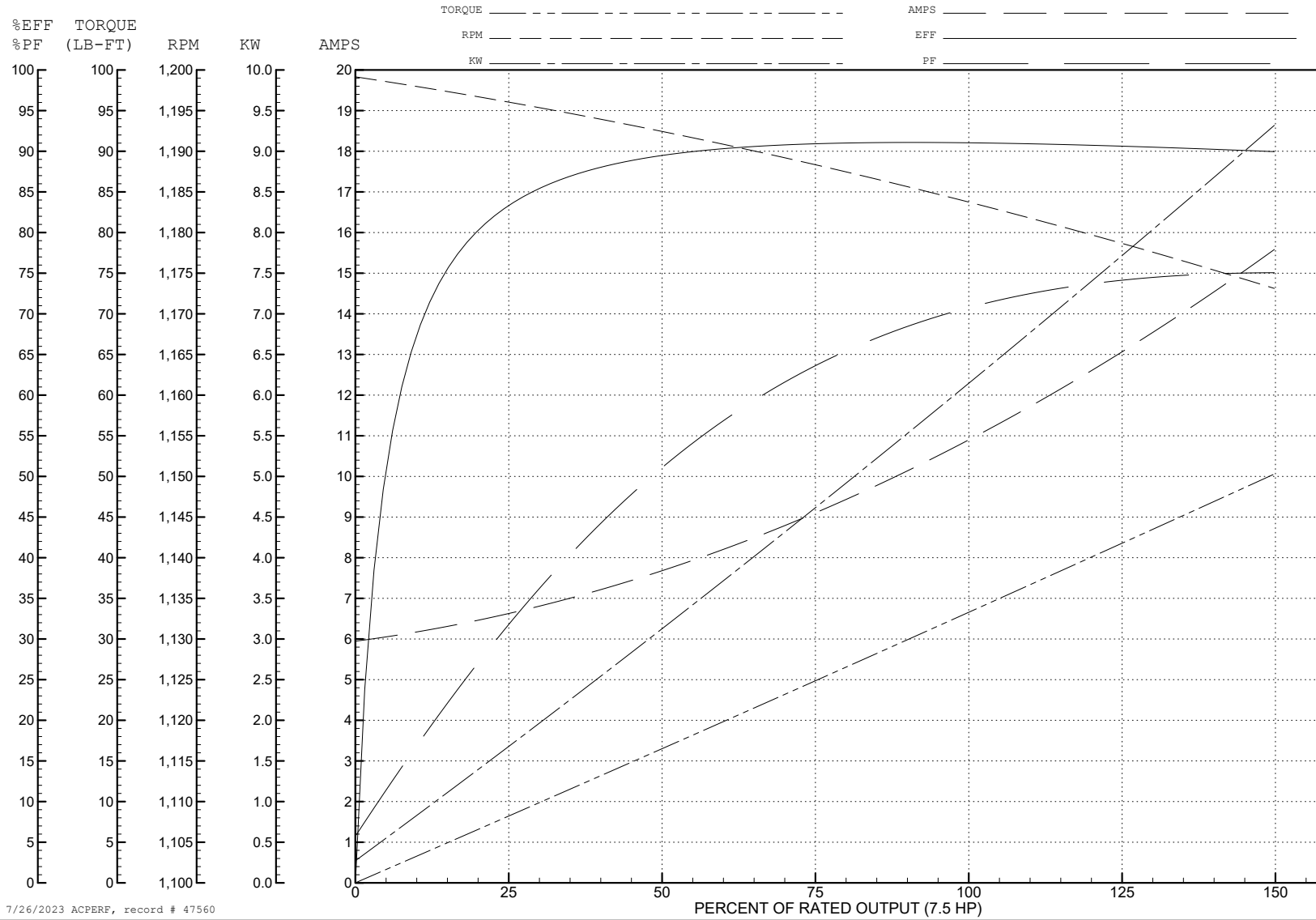
ABB Motors and Mechanical Inc.

WINDING # 09WGT118

7.5 HP 3 PH 60 HZ 1183.7 RPM 460 V 0954M

Typical performance - not guaranteed values.

TORQUES (LB-FT): PO=113 PU=41.3 LR=57.4 LRA=74.8



7/26/2023 ACPERF, record # 47560

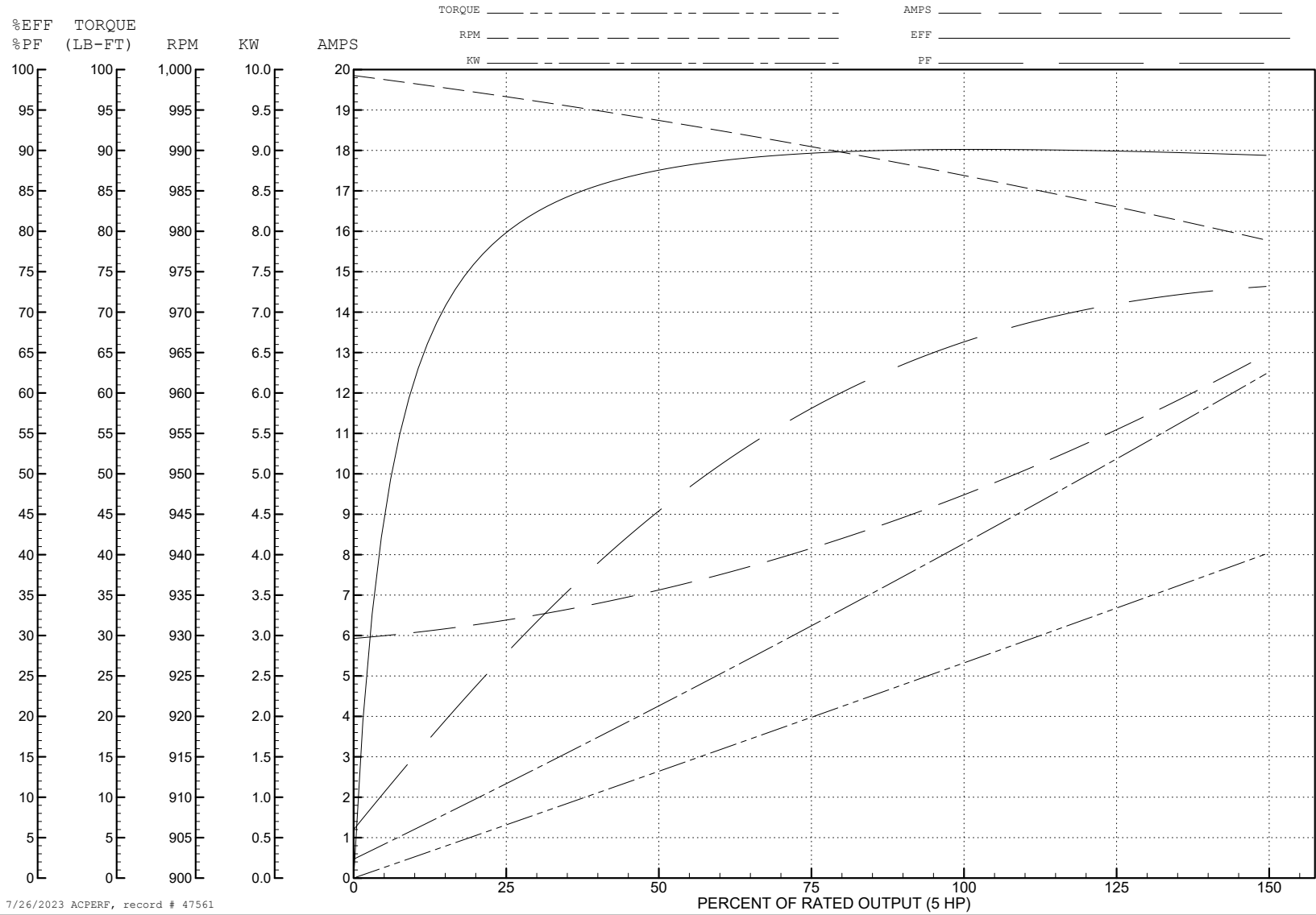
ABB Motors and Mechanical Inc.

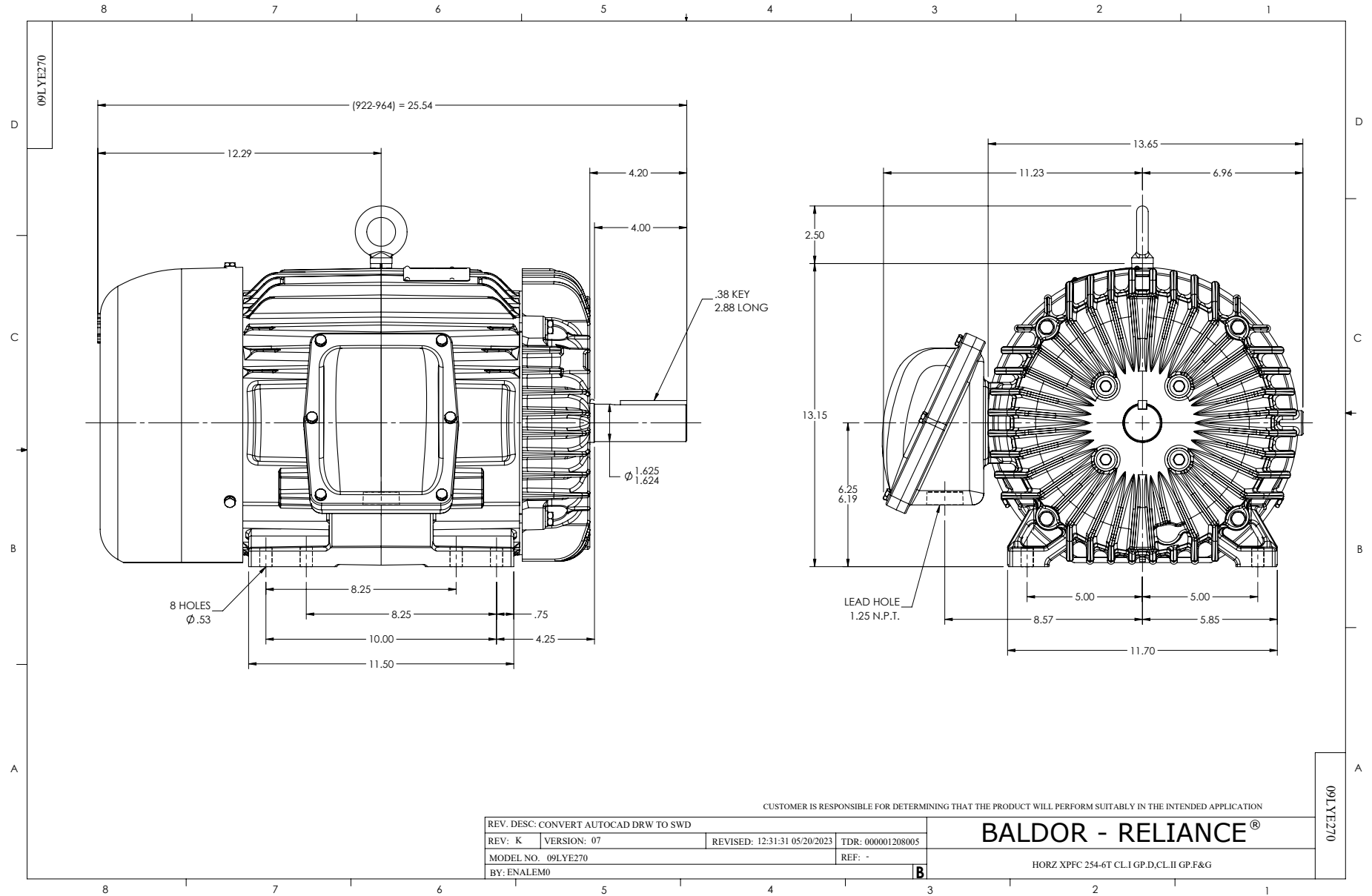
WINDING # 09WGT118

5 HP 3 PH 50 HZ 987 RPM 380 V 0954M

Typical performance - not guaranteed values.

TORQUES (LB-FT): PO=109 PU=43.5 LR=60.5 LRA=73.4





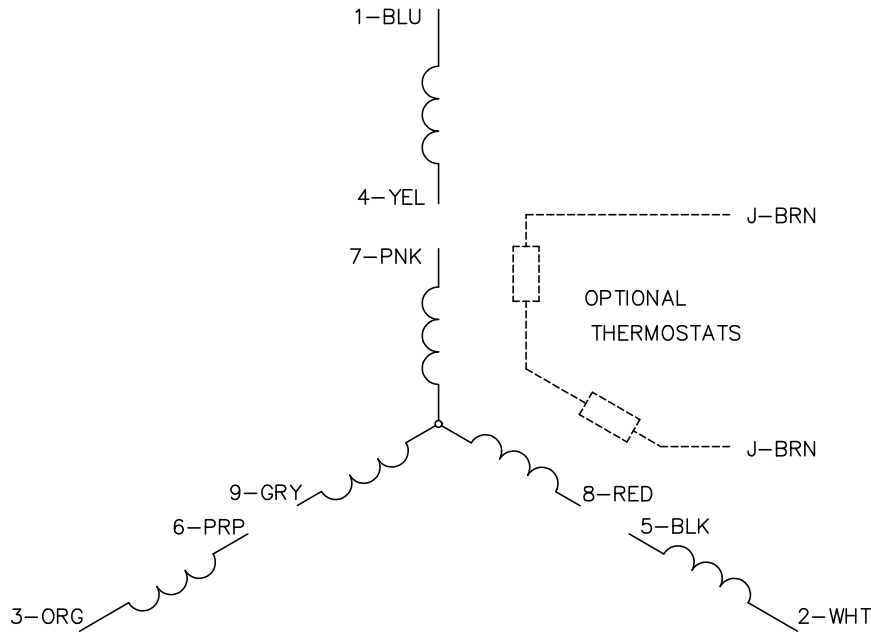
CUSTOMER IS RESPONSIBLE FOR DETERMINING THAT THE PRODUCT WILL PERFORM SUITABLY IN THE INTENDED APPLICATION

REV. DESC: CONVERT AUTOCAD DRW TO SWD			
REV: K	VERSION: 07	REVISED: 12/31/2023	TDR: 000001208005
MODEL NO. 09LYE270		REF: -	
BY: ENALEM0		B	

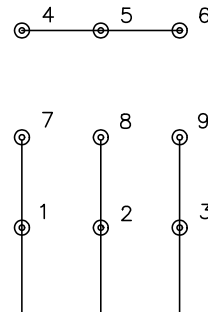
BALDOR - RELIANCE®

HORZ XPFC 254-6T CL I GP.D,CL II GP.F&G

CD0005

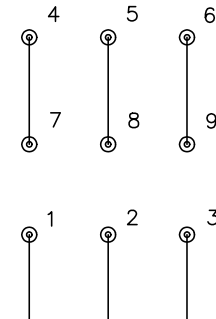


LOW VOLTAGE
(2Y)



LINE

HIGH VOLTAGE
(1Y)



LINE

NOTES:

1. INTERCHANGE ANY TWO LINE LEADS TO REVERSE ROTATION.
2. OPTIONAL THERMOSTATS ARE PROVIDED WHEN SPECIFIED.
3. ACTUAL NUMBER OF INTERNAL PARALLEL CIRCUITS MAY BE A MULTIPLE OF THOSE SHOWN ABOVE.
4. LEAD COLORS ARE OPTIONAL. LEADS MUST ALWAYS BE NUMBERED AS SHOWN.

CD0005

REV. DESC: REVISE TO SHOW OPTIONAL COLORS			
REV. LTR: E	BY: JLP	REVISED: 01/19/99 10:15	TDR: 0171435
S00000		FILE: AAA00005140	MDL: -
		MTL: -	

BALDOR ELECTRIC Co.

3PH, DV, 9 LEADS